



INSTALLATION MANUAL

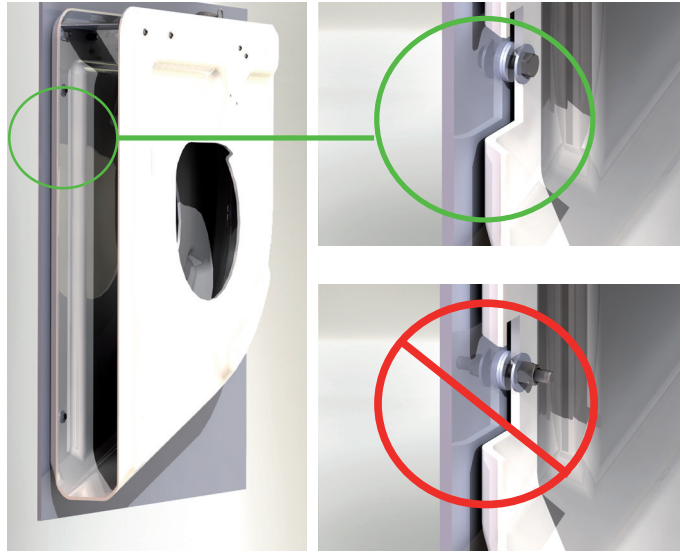


LIFEBUOY RELEASE SYSTEM Mk II

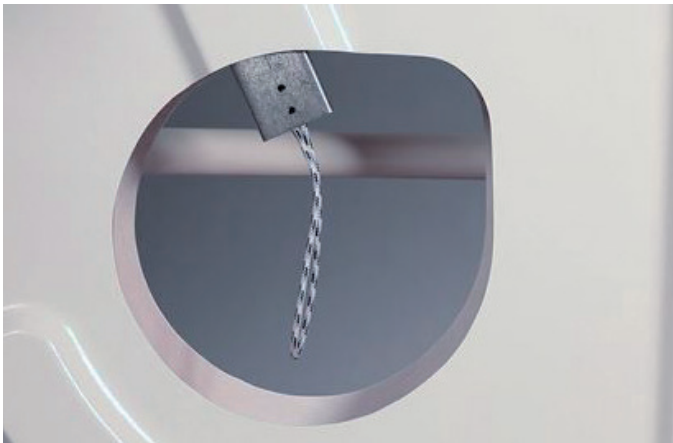
for electric/water release

INSTALLATION

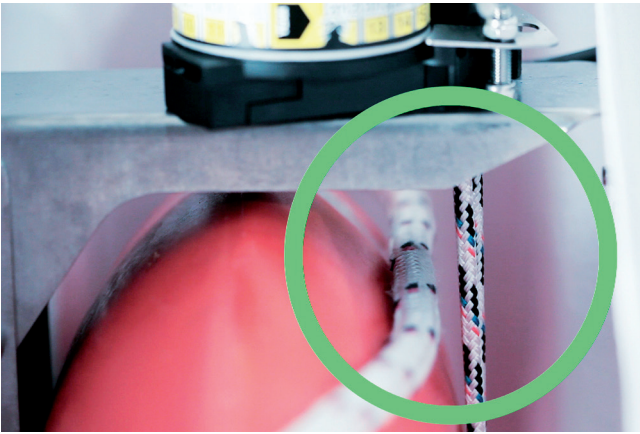
1. Mount the GRP holder in a position so that a released lifebuoy will easily fall into the water.
2. Follow the instructions for the mounting bolts in accordance with the pictures. Make sure that you mount double washers between frame or bulkhead and the GRP holder.



3. Mount the connector box close to the GRP holder. Make sure that the cable from the ERU is long enough to reach the connector box. The connector box shall be mounted with the cable glands horizontal in order to avoid water ingress. Always tighten the cable glands.
4. Mount the Release Switch in an easy to locate and manage position on the bridge. The Release Switch shall always be mounted inside the wheelhouse or bridge.
5. Install the screened cable from the connector box to the Release Switch and connect the black ERU cable to the connector box.
6. Connect 24V emergency power supply to the Release Switch. Ensure that you follow the enclosed connection drawing. Test the electrical installation according to instructions on the drawing or the enclosed document "Test of the Lifebuoy Release System".
7. The ERU is pre-installed. The ERU must be marked with its Expiry Date prior to installation onboard. The expiry date is 2 years, or otherwise stated on the product, from month of installation onboard. The release unit is labelled with a marking for year and month. Use a knife and carefully scratch away the appropriate square for month and year of expiry. (For installation of the ERU, see Replacement Manual).
8. Put a lifebuoy 2/3 into the GRP holder and then secure it for the installation phase. Use the supplied thin white pilot line to pull the release cord through the ERU unit.



Make sure that the lifebuoy line is not on the outward side of the release cord! This might entangle the lifebuoy in an activation situation.



9. Pull up the release cord through the ERU hole with the pilot line. Secure it with the manual safety pin.



10. Connect the power to the Release Switch.

11. The safety cover on the Release Switch shall be secured with some kind of easy-to-break seal, in order to avoid unintentional use of the system.

12. The system is now ready for use. The ERU shall be changed after two years of service.

TEST OF THE LIFEBOUY RELEASE SYSTEM

TESTING THE MECHANICAL RELEASE FUNCTION

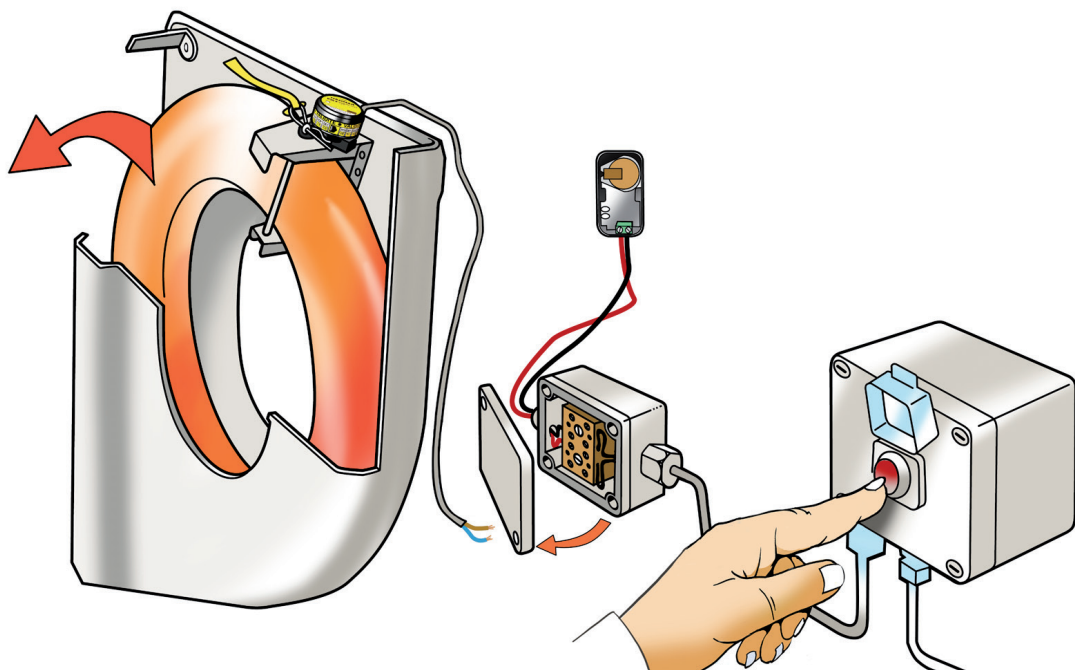
1. Secure the Lifebuoy to avoid accidental release.
2. Remove the manual safety pin holding the release cord.
3. The Lifebuoy will be released and launched from the GRP holder.

TESTING THE ELECTRONIC RELEASE FUNCTION BY USING THE EMULATOR HM-0467

1. Open the enclosure of the Emulator and attach two connection wires to the terminals on the Emulator. (Do not use too much torque on the terminal screws)
2. Push the push button on the circuit board to switch on the Emulator. The red and the green LED on the circuit board shall light up simultaneously. The green LED will start flashing green and the device is ready to be used.
3. Open the Connector box (mounted close to the GRP holder) and disconnect the flexible cable of the H2O ERU. Connect the two connection wires from the Emulator to the terminals on the Connector box, where the flexible cable was mounted. (The polarity is not important).

The Emulator can be left without observation mounted to the Connector box, as the Emulator will hold the indication of the LED turning from green to red if activated until the device is reset manually.

4. Push the Release Switch (should be mounted on the bridge or inside the wheelhouse) to activate the output of the Lifebuoy Release unit. The Emulator's LED will change from LED flashing green to LED flashing red if the output has been activated and the system is functional.



IMPORTANT: Remember to reconnect the H2O ERU and the safety pin after the test!

COMPLETE SYSTEM

PACKAGE



1 One GRP holder with pre-installed metal spring holder (HM-0615). The GRP holder can be mounted on port or starboard side of the ship and no change of the metal spring holder is needed. Measurements and hole positions - please check enclosed drawing.

2 One ERU (electric remote unit HM-0409) with cord pre-installed on the metal holder. The ERU cable is 1,5m long and shall be well strapped to the GRP holder in order to avoid any damage by weather or wind.

3 One Release Switch (HM-0550) in protective box to be mounted at the wheelhouse or bridge, IP66 class. Colour: silky grey. If mounted outside it shall be protected by an outer protective enclosure. Maximum diameter for cable 12mm. If the Release Switch shall be mounted flush in a bridge control panel please specify in the order - HM-0551 Release Switch for flush mounting.

Measurements and hole position - please check enclosed drawing.

4 One connector box (HM-0430) in marine grade plastic, IP66 class. Colour: steel grey. Maximum diameter for cable 12mm. Measurements and hole positions - please check enclosed drawing.

5 20m cable (HM-0440) from connector box to release switch, marine approved, screened 2 x 0,75mm², diameter 8mm. Longer lengths can be supplied on request by additional meter price. Maximum length of the installation is 150m. The Hammar products are designed to handle any voltage drop, so there is no need to increase the cable dimensions more than our recommendation.

Cable recommendations:

0 - 75m installation length: 2 x 0,75mm²

75 - 150m installation length: 2 x 1,5mm².

Cables with a diameter larger than 12mm can not be handled in the cable glands and terminal blocks. Electric power required is 24VDC emergency power.

6 One manual safety pin in stainless steel.

7 One pilot line for loading the lifebuoy.

8 Installation manual and user guide.

AVAILABLE OPTIONS



Article	HM-0600 Complete package	HM-0601 Package without cable and connector box	HM-0605 Complete package with flush mount Release Button	HM-0615 GRP holder
HM-0615 1pcs GRP holder with pre-installed metal spring holder	X	X	X	X
HM-0409 1pcs ERU	X	X	X	
HM-0550 1pcs Release Switch	X	X		
HM-0430 1pcs connector box	X		X	
HM-0440 20m cable	X		X	
Safety pin 1pcs	X	X	X	X
Pilot line 1pcs	X	X	X	X
Installation manual 1pcs	X	X	X	
HM-0551 1pcs Flush mount release button			X	

Also available in Lifebuoy release system portfolio:

Manual release only - HM-0610

Vacuum operated system - HM-0650

ATEX approved products, please contact Hammar for further information.

SPAREPARTS

Part no.

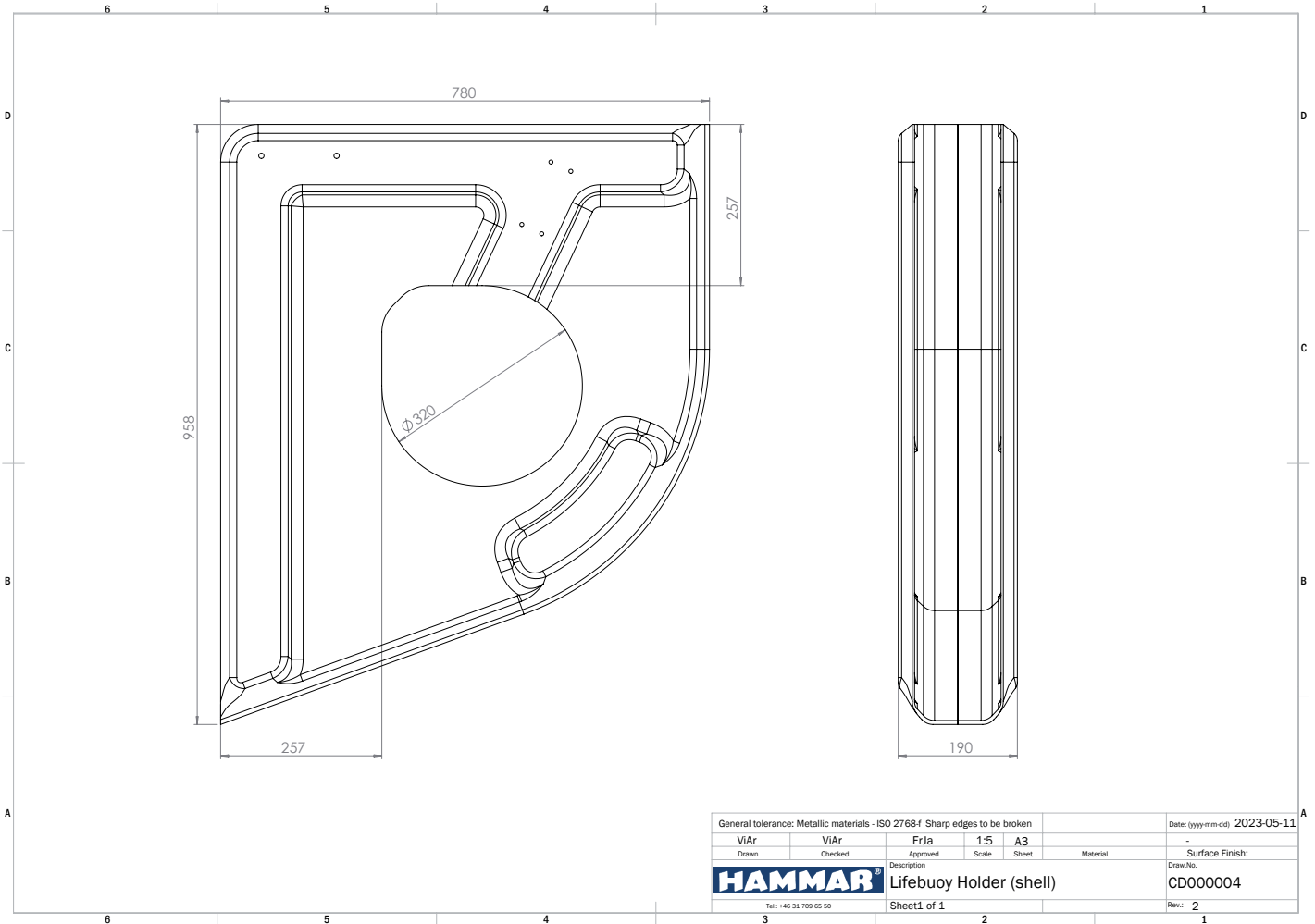
HM-0620 Lifebuoy metal spring holder only.



HM-0630 Replacement kit for Lifebuoy System MkII, ERU electric/water activation - HM-0600 with release cord and installation manual in English.



GRP HOLDER DRAWING



Sideview



Backview



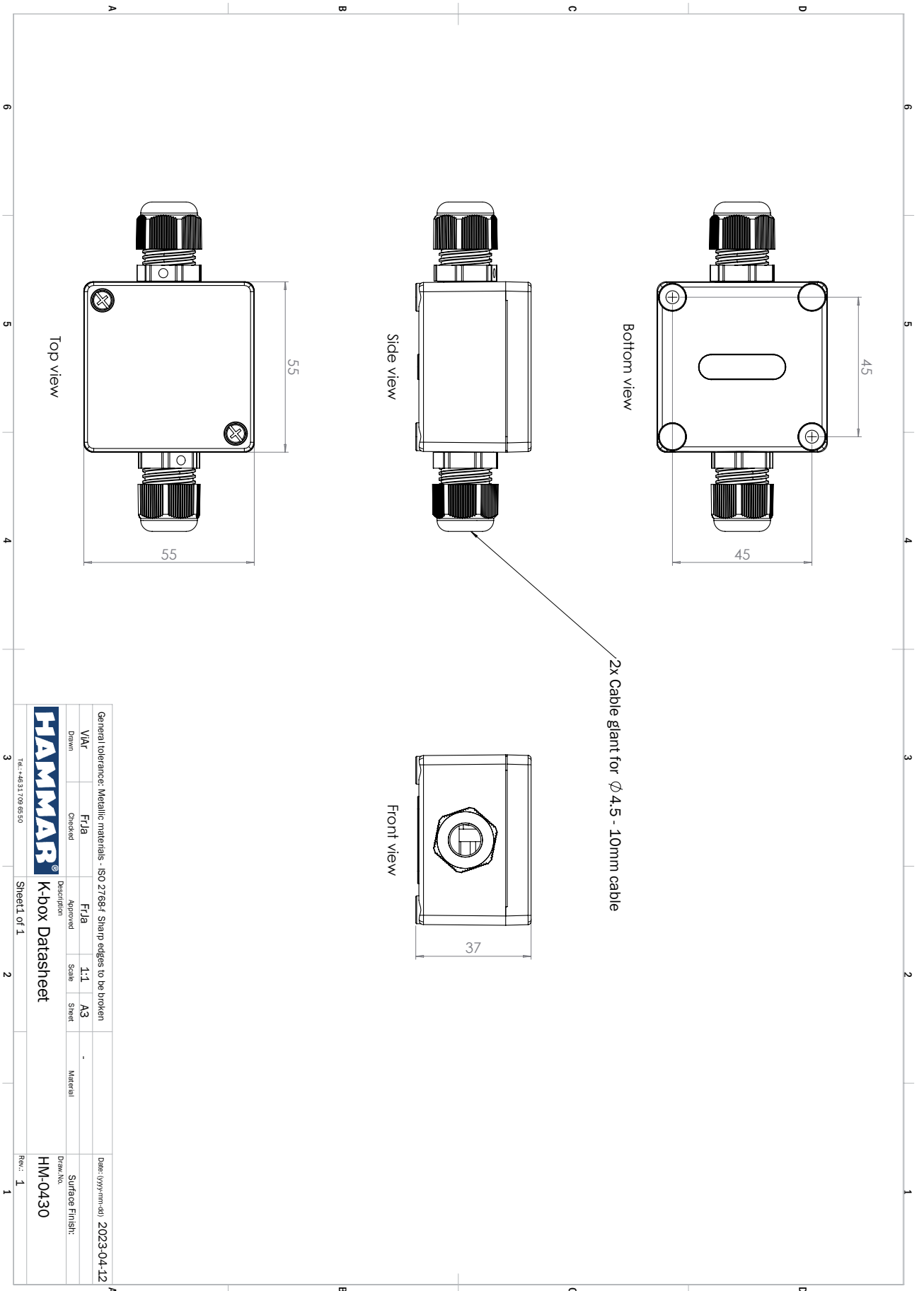
Frontview



Topview

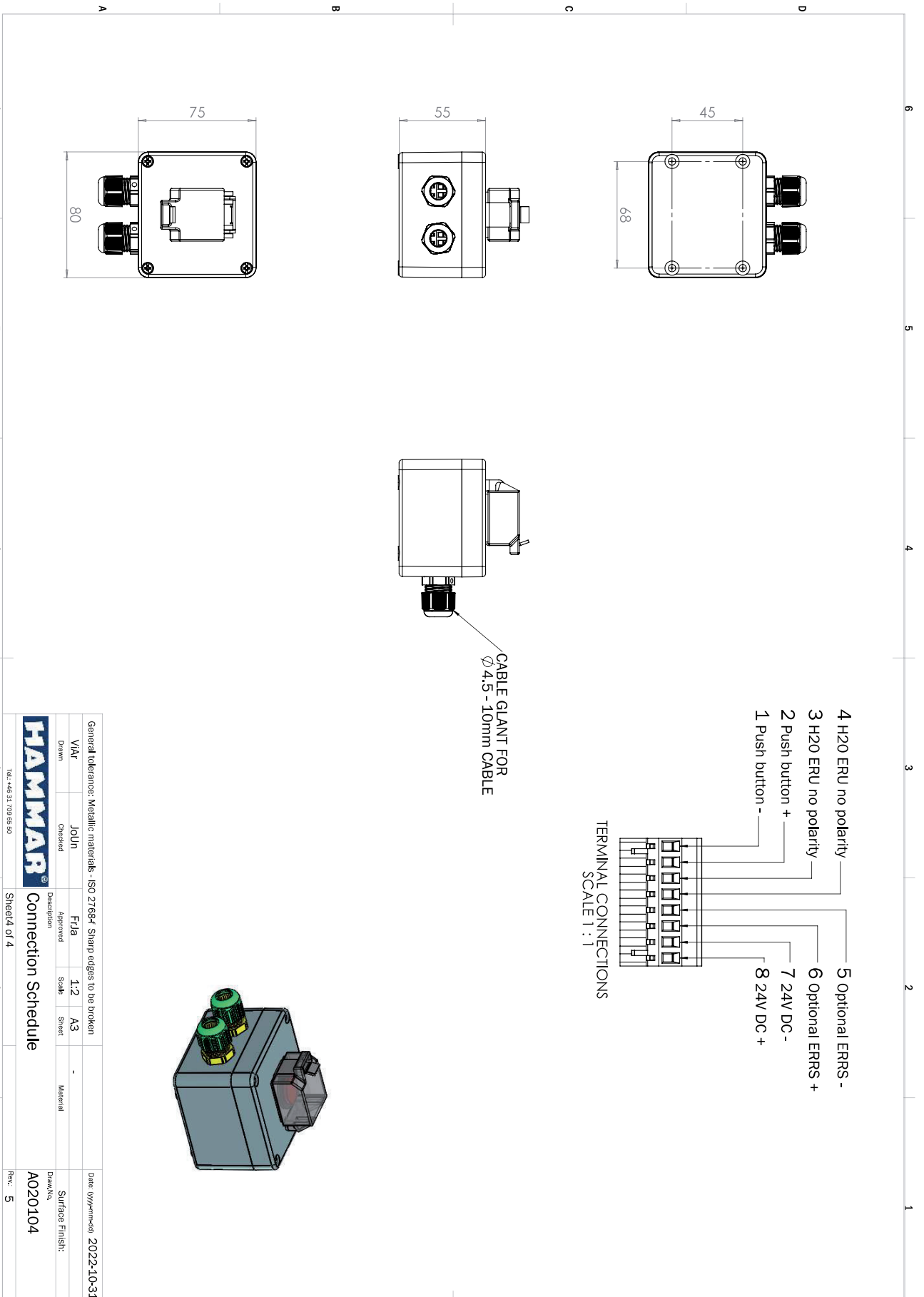


CONNECTOR BOX DRAWING



General tolerance: Metallic materials - ISO 2768-f Sharp edges to be broken				Date: (yy/mm/dd) 2023-04-12
VAR	Fr/A	Fr/A	1:1	A3
Drawn	Checked	Approved	Scale	Sheet
Description: K-box Datasheet				Material: -
HAMMAR®				Surface Finish: HM-0430
Tel: +46 31 709 8650				Draw No: HM-0430
Sheet 1 of 1				Rev.: 1

RELEASE SWITCH BOX DRAWING



General tolerances: Metallic materials - ISO 2768-F Sharp edges to be broken			
Drawn	Checked	Approved	Scale
VIAI	JOUn	Fda	1:2
Description		Sheet	A3
HAMMAR Connection Schedule		Material	
Date: (YYYYMMDD) 2022-10-31		Surface Finish:	
Drawn No: A020104		Rev: 5	
Tel: +45 31 708 95 90		Sheet 4 of 4	

